

Peter Döhle

MSC Fabiola-Class, Portugal



DeepBlueLAB™
Exhaust Gas Cleaning



SOx- Exhaust Gas Cleaning System

Peter Döhle

MSC Fabiola Class, Portugal

Integrator

SDC Hamburg

Owner

Peter Döhle

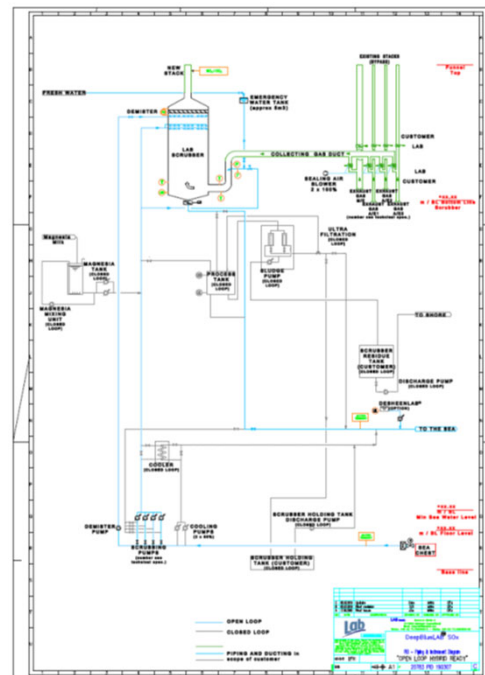
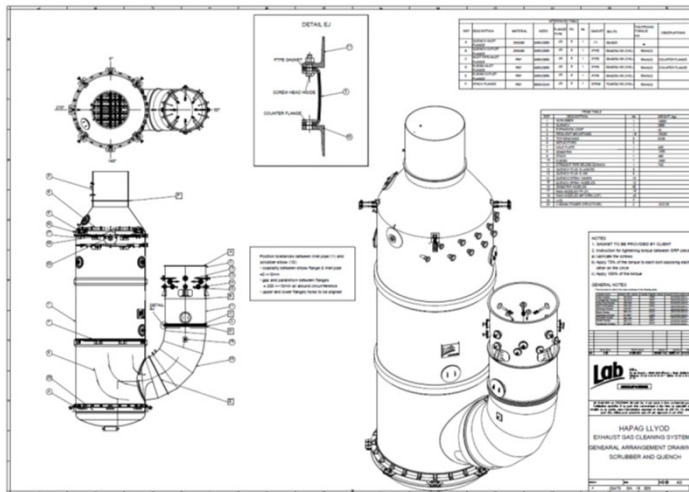
Dry Dock

2019

DATA

- Length: 366 m
- Beam: 48 m
- Containers: 12,600
- Reefers: 1,000
- Offline Scrubber for 1 ME and 4 AEs
- DNV-GL
- B&W 2-stroke @ 43 MW
- D/G @ 12 MW
- Desulphurization 3,5% → 0,1%

TECHNOLOGY



FEATURES



- One Offline GRP Scrubber
- Hybrid Ready Technology
- CFD modelled Design for low pressure drop
- Compliance with Marpol Annex VI

Rev. 01/19